

Global investment fund that may invest between 0% and 100% of its assets in financial UCITS, as set out in Article 48.1. c) and d) of the CII Regulations that are eligible assets, whether harmonized or not, belonging or not to the Management Company's group, as well as in IICIL and IICILICIL, and in shares and participations in similar Spanish or foreign venture capital entities, provided that they are transferable, whether or not managed by entities of the Management Company's group. However, the SIL may only invest up to 10% of its assets in assets whose subscription and redemption frequency is lower than that of the SIL itself. No investments will be made in illiquid assets. The SIL may invest, either directly or indirectly through UCITS, in equity and fixed income assets, with no predetermined percentages for investment in each asset class, and the entire exposure may be in fixed income or equities. There is no predetermined objective or maximum limits with regard to the distribution of assets by type of issuer, issue/issuer rating, duration, market capitalization, currency, economic sector, or country.

Risk Indicator



Principal characteristics

Category	GLOBAL
ISIN	ES0178551000
Management Company	Anta Asset Management
Depositary	Banco Inversis
Auditor	Ernst & Young, S. L.
Currency	EUR
Minimum investment	100,000 euros
AUM (millions)	4,98
Management fee	1,22%
Fund Volatility	18,23

Management team



Federico Battaner
Investment Director

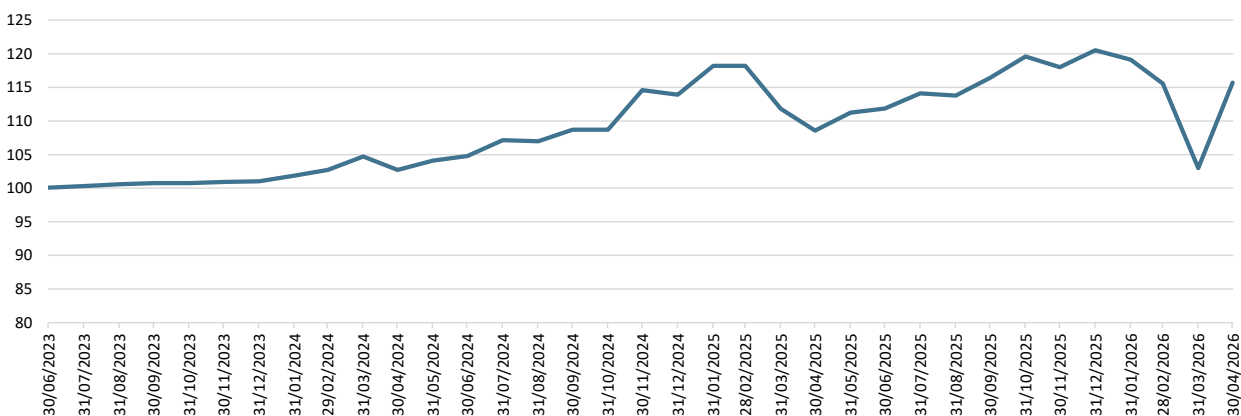


Javier Gil
Fund Manager



Víctor Morales
Fund Manager

Past performance



	Jan	Feb	Mar	Apr	May	Jun	Jul	Aug	Sep	Oct	Nov	Dec	Annual	
Perf.	-1,16%	-2,98%	-10,89%	12,34%									-4,01%	2026
	3,79%	-0,02%	-5,39%	-2,92%	2,47%	0,56%	2,02%	-0,31%	2,32%	2,74%	-1,33%	2,13%	5,82%	2025

Asset allocation

Asset class	%
Cash	14,87%
Equities	65,58%
Corporate bonds	2,02%
Government bonds	0,00%
Funds	16,38%

Currency allocation

Country	Value	%
US dollar	2.800.558,35	56,19%
Euro	828.918,45	16,63%
Canadian Dollar	155.294,63	3,12%
Danish krona	153.645,17	3,08%
Swedish krona	146.684,74	2,94%
Pound sterling	138.656,97	2,78%

Credit rating breakdown

Counterparty	Value	%
AAA	0,00	0,00%
AA	0,00	0,00%
A	0,00	0,00%
BBB	100.689,45	2,02%
BB	0,00	0,00%

Market capitalization per position

Bucket	Value	%
Cash	741.192	14,61%
< €250m	778.199	15,34%
€250m-2bn	62.910	1,24%
€2bn-10bn	320.309	6,31%
> €10bn	2.923.408	57,63%

Top 10 equity holdings

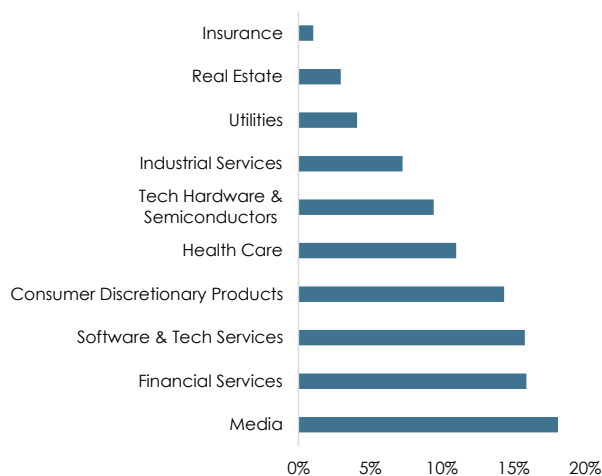
Asset name	%
Vaneck Asset Management Bv	6,65%
Alphabet Inc	4,28%
Taiwan Semiconductor Manufacturing Co Ltd	4,06%
Blackrock Asset Management Ireland Limited	3,75%
Amazon.Com Inc	3,17%
Constellation Software Inc	3,12%
Vaneck Investments Ltd	3,06%
Iberdrola Sa	2,80%
Nvidia Corp	2,39%
Kaspi.Kz Ao	2,20%

Top 10/20/30

Top 10	35,50%
Top 20	54,88%
Top 30	69,65%

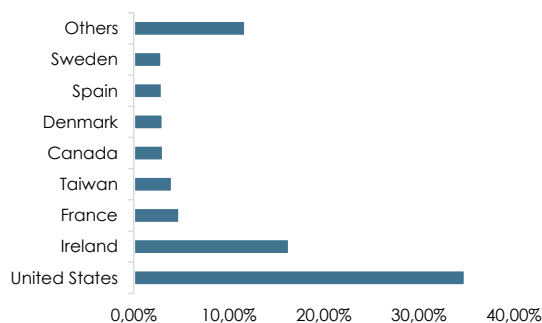


Sector allocation



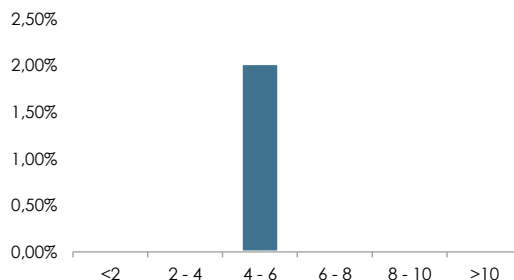
Source: Anta AM

Country allocation



Source: Anta AM

Duration Breakdown



Source: Anta AM

This document has been prepared by Anta Asset Management SGIC for information purposes only and does not constitute a recommendation to buy or sell. We advise potential investors to consult their advisors, prior to any investment, on the legal and tax implications of the investment, as well as, if applicable, on its suitability or appropriateness. All this with the understanding that no person should invest in financial products without having the capacity to evaluate, by himself or through his advisor, the advantages and risks of the investment. You can find the mandatory and necessary legal information on the website of Anta Asset Management SGIC: www.anta-am.com Anta Asset Management SGIC is a management company with CIF A-13937453 and registered with the CNMV under number 288.