

Global investment fund which may invest 0-100% of the assets in financial CIS, whether harmonised or not (maximum 30% in non-harmonised CIS), whether or not belonging to the Management Company's group, and may invest up to 10% of the assets in alternative management CIS. Directly or indirectly through CIS, 0-100% of the total exposure shall be invested in equities or public/private fixed income, and may also have exposure to financial instruments whose performance is linked to dividends of shares or stock market indices of OECD markets, volatility and variance of equity indices of OECD countries, and to commodities. In both direct and indirect investments, there is no predetermination of issuers (public/private), market capitalisation, economic sectors, average duration of the fixed income portfolio or credit quality of issuers/issues, and the entire portfolio may be in fixed income of low credit quality (below BBB-) or even unrated. The issuers/markets will be from the OECD, and up to 50% of the total exposure may be invested in issuers/markets from emerging countries.

Risk Indicator



Management team



Federico Battaner
Investment Director

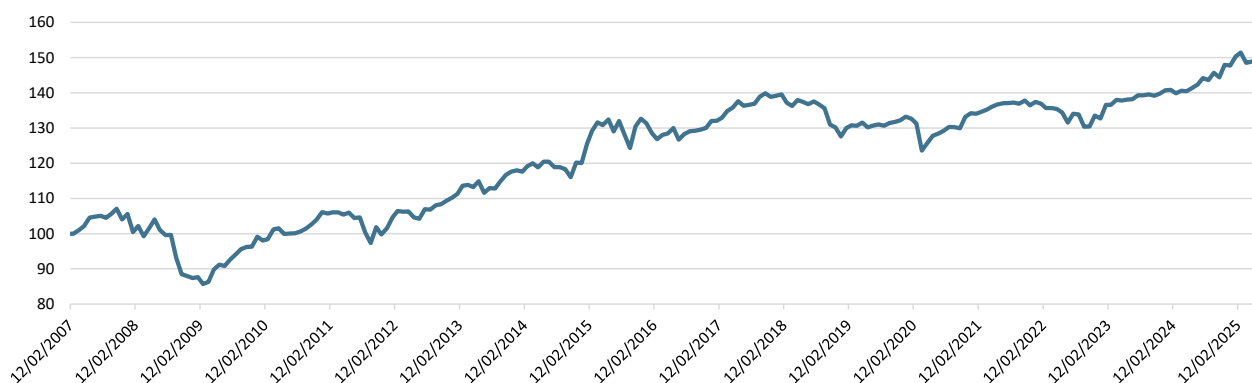


Víctor Morales
Fund Manager

Principal characteristics

Category	GLOBAL
ISIN	ES0142233032
Management Company	Anta Asset Management
Depository	Banco Inversis
Auditor	PWC
Currency	EUR
Minimum investment	10 euros
AUM (millions)	6,18
Management fee	0,30%
Fund Volatility	4,19

Past performance



	Jan	Feb	Mar	Apr	May	Jun	Jul	Aug	Sep	Oct	Nov	Dec	Annual	
Perf.	1,76%	0,71%	-1,90%	0,21%	0,41%	-0,01%							1,15%	2025
	0,11%	-0,67%	0,51%	-0,13%	0,68%	0,68%	1,30%	-0,42%	1,44%	-0,87%	2,47%	-0,14%	5,04%	2024

Asset allocation

Asset class	%
Cash	6,37%
Equities	21,14%
Corporate bonds	10,97%
Government bonds	57,88%
Funds	3,46%

Currency allocation

Country	Value	%
Euro	4.228.699,75	68,45%
US dollar	1.260.946,62	20,41%
Pound sterling	205.631,35	3,33%
Danish krona	77.740,10	1,26%

Credit rating breakdown

Counterparty	Value	%
AAA	34.605,70	0,56%
AA	515.436,18	8,34%
A	1.368.006,35	22,14%
BBB	2.032.776,93	32,90%
BB	197.145,53	3,19%

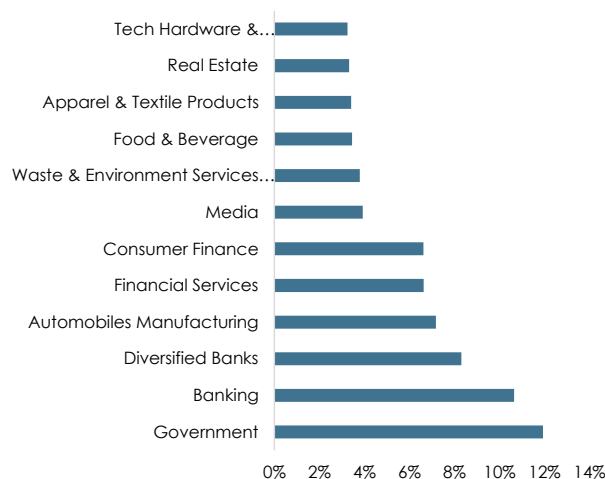
Top 10 equity holdings

Asset name	%
Kering Sa	3,88%
Porsche Automobil Holding Se	3,34%
Banco Santander Sa	3,19%
Kaspi.Kz Ao	2,81%
Euronext Nv	2,37%
Saudi Arabia, Kingdom Of (Government)	2,33%
Edenred Se	2,32%
United Kingdom Of Great Britain And Northern Ireland	1,89%
Pimco Global Advisors Ireland Ltd	1,88%
Fcc Servicios Medio Ambiente Holding Sau	1,80%

Top 10/20/30

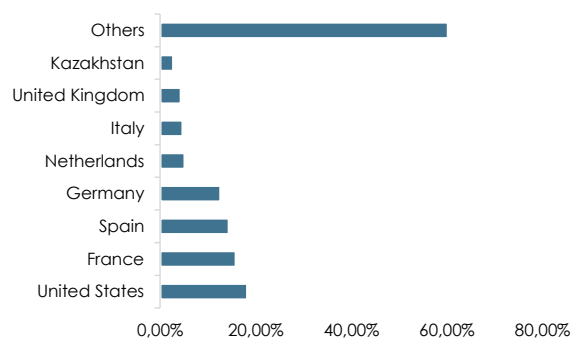
Top 10	25,81%
Top 20	42,49%
Top 30	58,19%

Sector allocation



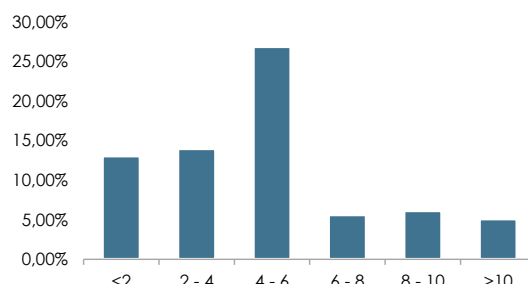
Source: Anta AM

Country allocation



Source: Anta AM

Duration Breakdown



Source: Anta AM

This document has been prepared by Anta Asset Management SGIIIC for information purposes only and does not constitute a recommendation to buy or sell. We advise potential investors to consult their advisors, prior to any investment, on the legal and tax implications of the investment, as well as, if applicable, on its suitability or appropriateness. All this with the understanding that no person should invest in financial products without having the capacity to evaluate, by himself or through his advisor, the advantages and risks of the investment. You can find the mandatory and necessary legal information on the website of Anta Asset Management SGIIIC: www.anta-am.com Anta Asset Management SGIIIC is a management company with CIF A-13937453 and registered with the CNMV under number 288.